

ICT Develop Leading Edge System

Case Study: Acquired Brain Injury (ABI) System

Unity ICT has implemented a bespoke and unique development to aid the Pennine Care NHS Foundation Trust in its care and treatment of patients who have acquired brain injuries. This system is believed to be the first of its kind outside the private sector and is providing a significant benefit to both users and patients at Mimosa House in Oldham.

Background

Mimosa House in Oldham supports individuals on a residential basis who have acquired brain injuries. Care and rehabilitation is provided in whatever capacity needed to aid a smooth transition into becoming independent again and by re-establishing themselves into their own community when they are ready. Mimosa House is a supported living facility with six individual flats, where tenants rent and qualified personnel operate within the establishment.

The ABI support initiative was established jointly by Health and Social Services in direct response to individuals wanting to move back into Oldham and it has proven to be a very cost effective way of supporting those individuals. The service uses person-centred models ensuring all processes and support systems place the person at the centre of their 'Rehabilitation Programme'.

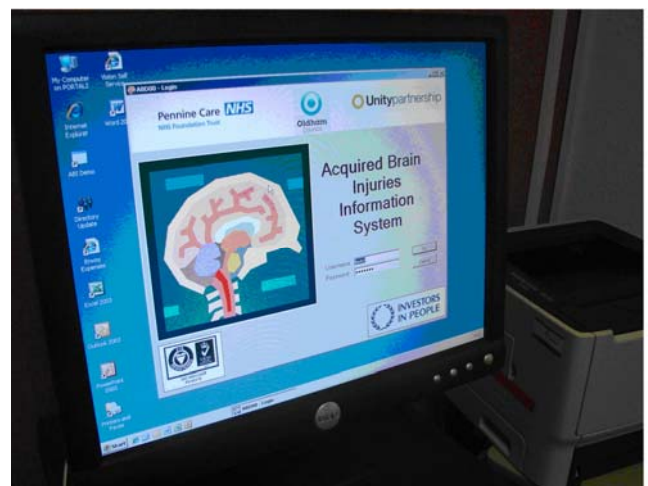
Regulation is by the Care Quality Commission (CQC) and by Supporting People who have their own set of Quality Assurance Standards. Mimosa House has now received the world recognised CARF Accreditation (Commission on Accreditation of Rehabilitation Facilities) and Mimosa House are the only non private organisation to receive this in the UK.

The Problem

The issue that the Clinical Psychology Department had at Mimosa House was in the tracking of patients' progress and the ability to therefore monitor and report on improvement outcomes. There were no off the shelf systems available for purchase that would offer such a specific level of functionality and the staff had operated for years without any way of drawing together formal or structured recording and monitoring facilities. Accreditation has been achieved but this is a renewable process every 3 years and therefore the desire to retain its status is also dependent on demonstrating that a solid control mechanism by using a fit for purpose system is of critical importance.

The Solution

Unity ICT were commissioned to undertake the development of a system that would revolutionise the care management of the Mimosa House patients.



Unity ICT worked in collaboration with Dr Gemma Wall, Specialist Clinical Psychologist in Neuropsychology from the Pennine Care NHS

Foundation Trust (Department of Clinical Psychology) who provided a very well defined requirement.

The new development is a networked application and has been developed in VB.NET and SQL Server 2005. By utilising a Rapid Applications Development (RAD) technique, the iterative development process has resulted in a comprehensive system consisting of numerous screens and reports and all delivered within 3 weeks, a timescale achievable only with an experienced application developer, in this case Cath Forde (Unity ICT) and a solid set of requirements.



The system has been running live now for 4 months and is used by staff in both the NHS and from within Oldham Council. Current patient data is still being loaded into the system and is due to complete early March. It supports individualised patient recovery plans and allows medical staff to monitor progress of patients at Mimosa House whilst also recording those who may have been referred but who did not qualify for admission for this service.

The Benefits

Outside of the private sector, this system is believed to be the first of its kind in the country to record and present data in this way and fully satisfies current requirements of the NHS Foundation Trust. The system automates what has been a manual or even

an absent process and the benefits of the system can be summarised as:

- Improved Recording of Patient Progress / Targets
- Formal recording of Patient Referrals
- Recording and Monitoring of Patient Behaviours
- Monitoring of Clinical Outcomes against Targets
- Monitoring of Cost Savings / Cost of Care
- Monitoring times from Referral to Admission
- Monitoring times from Admission to Discharge
- Sophisticated Reporting with Graphical illustrations
- Improved Staff Satisfaction
- Improved Patient Wellbeing
- Improved Progress Information to relatives
- Documented progress for Accreditation evaluation

Dr Gemma Wall is pictured opposite with Steve Ball (Unity ICT) and is totally satisfied with the ABI System to manage her department and has the following recommendation:

“the database allows easy, yet sophisticated demonstration of outcomes for neuro-rehabilitation for the benefit of service users and other stakeholders: it is an investment in quality in all senses”

- Dr Gemma Wall
(Specialist Clinical Psychologist, Neuropsychology)

For more information please contact:

Name: Steve Ball
Telephone number: 0161 770 4991
Email: steve.ball@unitypartnership.com
ICT Department

‘.....The ICT division has made many improvements, and we plan to continue to improve the services we deliver in Oldham and for other customers.’
- Trevor Slade (Unity ICT Services Director)

In Partnership with Oldham Council